



Federal Aviation Administration

Memorandum

Date:

To: Patricia Horan, District Manager of Support, Anchorage Seattle District,
TWAS

From: Shawn M. Kozica, Manager, Operations Support Group, Western
Service Center, AJV-W2

Subject: Bend Municipal Airport, Bend OR

On August 7, 2019, the Western Service Center Operations Support Group (OSG) received a request, from the Seattle ARTCC airspace office, to review the airspace established for the Bend Municipal Airport. The ARTCC specifically requested an assessment of whether the airport was a candidate for Class E2 airspace extending upward from the surface. OSG completed a review of the airport, as prescribed by JO 7400.2M, *Procedures for Handling Airspace Matters*. Using established criteria, OSG determined that Bend Municipal Airport requires additional airspace to ensure operations remain within control airspace and proposes the following airspace changes for the airport; establish Class E2 airspace, establish Class E4 airspace designated as an extension to the Class E2, and amend the Class E5 airspace extending upward from 700 feet above the surface.

Based on the assessment OSG developed the following draft legal description.

ANM OR E2 Bend, OR (NEW)

Bend Municipal Airport, OR

(lat. 44°05'40" N., long. 121°12'01" W.)

That airspace extending upward from the surface within a 3.9-mile radius of the Bend Municipal Airport, excluding that airspace within 1 mile of a point in space at lat. 44°02'51" N., Long. 121°16'30" W.

ANM OR E4 Bend, OR (NEW)

Bend Municipal Airport, OR

(lat. 44°05'40" N., long. 121°12'01" W.)

That airspace extending upward from the surface within 1 mile each side of the 167° bearing from the airport extending from the 3.9-mile radius to 6.8 miles south of the Bend Municipal Airport.

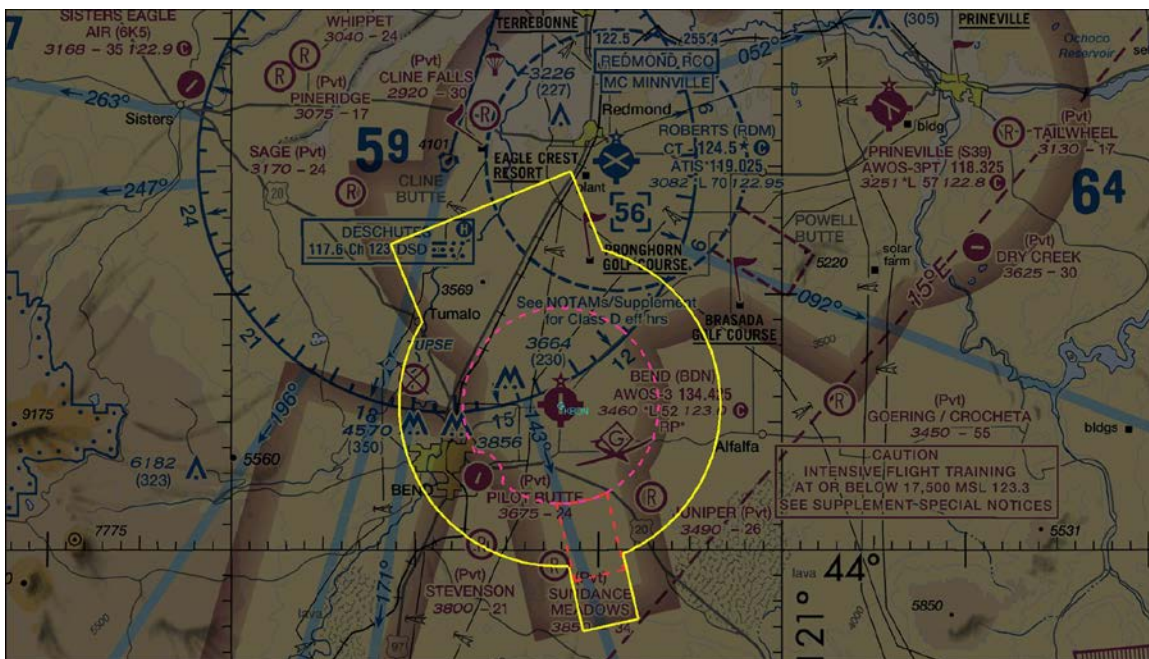
ANM OR E5 Bend, OR (AMENDED)

Bend Municipal Airport, OR

(lat. 44°05'40" N., long. 121°12'01" W.)

That airspace extending upward from 700 feet above the surface within a 6.4-mile radius of the airport, and within 1.1 miles each side of the 167° bearing from the airport extending from 6.4-mile radius to 8.8 miles south of the airport, and within 3.8 miles each side of the 338° bearing from the airport extending from the 6.4-mile radius to 8.4 miles north of the Bend Municipal Airport.

Proposed Airspace for Bend Municipal Airport on a sectional.



The area within the dashed pink lines represents the proposed Class E2 airspace area.

The area within the dashed red lines represents the proposed Class E4 airspace area.

The area within the solid yellow lines represents the proposed Class E5 airspace area.

For further information concerning this matter, please contact Matt Van Der Wal, WSC, OSG, matthew.van.der.wal@faa.gov or (206) 231-3695.